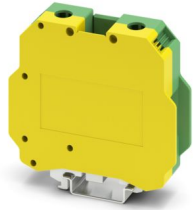


USLKG 50 - Protective conductor terminal block

0443049

<https://www.phoenixcontact.com/ie/products/0443049>

Please be informed that the data shown in this PDF document is generated from our online catalog. Please find the complete data in the user documentation. Our general terms of use for downloads are valid.



Protective conductor terminal block, number of connections: 2, number of positions: 1, connection method: Screw connection, Rated cross section: 50 mm², cross section: 16 mm² - 50 mm², mounting method: PE foot with mounting screw, M6, mounting type: NS 35/7,5, NS 35/15, NS 32, color: green-yellow

Your advantages

- Reliable cable connection is ensured by three-point centering of the conductor in the prismatic sleeve base
- Low contact resistance of the contact surface due to ribbing
- Screw locking by means of spring-loaded elements in the clamping part

USLKG 50 - Protective conductor terminal block



0443049

<https://www.phoenixcontact.com/ie/products/0443049>

Technical data

Product properties

Product type	Ground terminal block
Product family	USLKG
Number of positions	1
Number of connections	2
Number of rows	1

Insulation characteristics

Overvoltage category	III
Degree of pollution	3

Electrical properties

Rated surge voltage	8 kV
Maximum power dissipation for nominal condition	4.73 W

Connection data

Grounding foot	Yes
Number of connections per level	2
Nominal cross section	50 mm ²

Level 1 above 1 below 1

Connection method	Screw connection
Screw thread	M6
Note	Please observe the current carrying capacity of the DIN rails.
Tightening torque	6 ... 8 Nm
Stripping length	24 mm
Connection in acc. with standard	IEC 60947-7-2
Conductor cross-section rigid	16 mm ² ... 50 mm ²
Cross section AWG	4 ... 2 (converted acc. to IEC)
Conductor cross-section flexible	25 mm ² ... 50 mm ²
Conductor cross-section, flexible [AWG]	2 ... 2 (converted acc. to IEC)
Conductor cross-section flexible (ferrule without plastic sleeve)	25 mm ² ... 50 mm ²
Flexible conductor cross-section (ferrule with plastic sleeve)	25 mm ² ... 50 mm ²
Nominal cross section	50 mm ²

Ex data

Rated data (ATEX/IECEx)

Identification	⊕ II 2 GD Ex eb IIC Gb
Operating temperature range	-60 °C ... 110 °C
Ex-certified accessories	1205082 SZS 1,2X8,0 VDE 1201659 E/AL-NS 32 1201662 E/AL-NS 35

USLKG 50 - Protective conductor terminal block



0443049

<https://www.phoenixcontact.com/ie/products/0443049>

Torque range for PE foot	6 Nm ... 8 Nm
output	(Permanent)

Ex connection data General

Torque range	6 Nm ... 8 Nm
Nominal cross section	50 mm ²
Rated cross section AWG	1/0
Connection capacity rigid	16 mm ² ... 50 mm ²
Connection capacity AWG	6 ... 1/0
Connection capacity flexible	25 mm ² ... 50 mm ²
Connection capacity AWG	4 ... 1/0

Dimensions

Width	20 mm
Height	70.5 mm
Depth on NS 32	81 mm
Depth on NS 35/15	83.5 mm

Material specifications

Color	green-yellow
Flammability rating according to UL 94	V0
Insulating material group	I
Insulating material	PA
Temperature index of insulation material (DIN EN 60216-1 (VDE 0304-21))	125 °C
Relative insulation material temperature index (Elec., UL 746 B)	125 °C

Mechanical properties

General

Terminal block mounting	6 Nm ... 8 Nm (PE foot with mounting screw, M6)
-------------------------	---

Mechanical data

Open side panel	No
-----------------	----

Environmental and real-life conditions

Ambient conditions

Ambient temperature (operation)	-60 °C ... 110 °C (Operating temperature range incl. self-heating; for max. short-term operating temperature, see RTI Elec.)
Ambient temperature (storage/transport)	-25 °C ... 60 °C (for a short time, not exceeding 24 h, -60 °C to +70 °C)
Ambient temperature (assembly)	-5 °C ... 70 °C
Ambient temperature (actuation)	-5 °C ... 70 °C
Permissible humidity (operation)	20 % ... 90 %
Permissible humidity (storage/transport)	30 % ... 70 %

USLKG 50 - Protective conductor terminal block



0443049

<https://www.phoenixcontact.com/ie/products/0443049>

Standards and regulations

Connection in acc. with standard	IEC 60947-7-2
----------------------------------	---------------

Mounting

Mounting type	NS 35/7,5
	NS 35/15
	NS 32
Terminal block mounting	6 Nm ... 8 Nm (PE foot with mounting screw, M6)

Phoenix Contact 2026 © - all rights reserved

<https://www.phoenixcontact.com>

Phoenix Contact (Ireland) Ltd
C6 The Exchange, Calmount Park, Ballymount
Dublin 12, D12 XE18
+353/1/2051-300
info@phoenixcontact.ie